

nizuc

RESORT & SPA





CONFERENCE & EVENTS CENTER

The resort is perfectly designed for a range of events, from corporate meetings and incentive programs to social gatherings and weddings.

Our 5,760 sq. ft. ballroom has the capacity to host receptions for up to 500 guests, and our dedicated staff will manage every step of your event. The Conference & Events Center features panoramic ocean views, soaring 21-foot ceilings, and state-of-the-art technology, setting the stage for a successful and unforgettable event.

SIAN KA'AN BALLROOM

Our ballroom boasts a panoramic ocean view, floor-to-ceiling windows, a soaring 21-foot ceiling, state-of-the-art technology, and 5,760 sq. ft. of space. With an elegant and serene atmosphere, it's the perfect space to meet the needs of today's global business traveler. It can be divided into three separate rooms to accommodate smaller parties.

SISAL AND CELESTUN CONFERENCE ROOM

Two conference rooms equipped with state-of-the-art technology that feature natural light, 12-foot ceilings, and over 800 sq. ft. of space. Both rooms are perfect for breakouts, coffee breaks, or office space and can be used separately to accommodate smaller parties.

A-KAN TERRACE

A breathtaking oceanfront terrace that features a beautiful Amate tree and warm sunsets. Its close proximity to the lobby provides easy access for all participants, yet offers a private feeling for the group.

NIZUC BEACH

This expansive flat beach is the perfect location for any private beach event. Take in wonderful sunset views—it's the ideal beginning or end to a special program.

TERRA NOSTRA LOWER DECK

Experience this unique place where an outdoor terrace close to verdant mangroves and a flowing river make the perfect location for a dinner reception or an after party.

NIZUC GARDEN

A spacious lawn that offers the magic of a casual outdoor atmosphere and a starlit sky close to the mangrove.

MEETING SPACE	SQ. FT.	DIMENSIONS	HEIGHT	M2	DIMENSIONS	HEIGHT	COCKTAIL	BANQUET	BUFFET	THEATRE	CLASSROOM	U SHAPE	HOLLOW SQUARE	BOARDROOM	
INDOOR VENUES															
SIAN KA'AN	5760	(120 X 48 ft)	21 ft	535	(42 X 15 m)	6.4m	500	400	N/A	432	320	N/A	106	78	
SECTION I	1,776	(37 X 48 ft)	21 ft	165	(14 x 15 m)	6.4m	180	120	N/A	140	90	40	48	36	
SECTION I & II	3,984	(83 X 48 ft)	21 ft	370	(25.3 x 14.7 m)	6.4m	320	260	N/A	320	224	60	72	52	
SECTION II	2,160	(45 X 48 ft)	21 ft	201	(14 x 15 m)	6.4m	200	140	N/A	160	120	40	48	36	
SECTION II & III	3,984	(83 X 48 ft)	21 ft	370	(25.3 x 14.7 m)	6.4m	320	260	N/A	320	224	60	72	52	
SECTION III	1,776	(37 X 48 ft)	21 ft	165	(14 x 15 m)	6.4m	180	120	N/A	140	90	40	48	36	
SISAL CONFERENCE	880	(44 x 20 ft)	12 ft	82	(13.55 x 6.35 m)	3.66m	65	50	N/A	64	40	36	40	32	
CONFERENCE A	420	(21 x 20 ft)	12 ft	39	(6.7 x 6.35m)	3.66m	40	30	N/A	40	24	12	16	14	
CONFERENCE B	420	(21 x 20 ft)	12 ft	39	(6.7 x 6.35m)	3.66m	40	30	N/A	40	24	12	16	14	
CELESTUN CONFERENCE	880	(44 x 20 ft)	12 ft	82	(13.55 x 6.35 m)	3.66m	65	50	N/A	64	40	36	40	32	
CONFERENCE A	420	(21 x 20 ft)	12 ft	39	(6.7 x 6.35m)	3.66m	40	30	N/A	40	24	12	16	14	
CONFERENCE B	420	(21 x 20 ft)	12 ft	39	(6.7 x 6.35m)	3.66m	40	30	N/A	40	24	12	16	14	
OUTDOOR VENUES															
NIZUC BEACH	N/A	N/A	N/A	N/A	N/A	N/A	350	250	250	N/A	N/A	N/A	N/A	N/A	
A-KAN TERRACE	1,443	(55.4 X 59.4 ft)	N/A	440	(16.87 x 18.1m)	N/A	250	150	120	N/A	N/A	N/A	N/A	N/A	
NIZUC GARDEN	2,073	(61.1 X 1.03.8 ft)	N/A	632	(18.85 x 31.62m)	N/A	350	250	200	N/A	N/A	N/A	N/A	N/A	
DOCK	N/A	N/A	N/A	N/A	N/A	N/A	40	18	18	N/A	N/A	N/A	N/A	N/A	

*The capacities mentioned above are the maximum considered and may vary according to the set up type and production.



RESTAURANTS & LOUNGES

NIZUC Resort & Spa places great emphasis on creating an innovative culinary experience that offers a variety of settings and a diverse array of tastes all in one exquisite location. Led by an international team of master chefs, NIZUC introduces an oasis of culinary delights that will take guests on a journey through some of the world's most enticing cuisines. The resort's six unique dining options are a testament to its dedication to exciting, first-rate dining.

RAMONA

The restaurant offers contemporary Mexican cuisine. The modern fusion of Mexican favorites is as impressive as the oceanfront view.

INDOCHINE

Take a culinary journey through different regions in Asia. Indochine features dark wood and marble and overlooks a dramatically-lit reflective pool.

TERRA NOSTRA

NIZUC's Italian-Mediterranean restaurant features an array of homemade pastas and wood-oven specialties that showcase the freshest seasonal ingredients.

LA PUNTA

The restaurant nearest NIZUC's adult-only pool features a linear design and natural wood to create an exotic, luxurious place. The grill features an array of steak and fish.

NI

At the resort's Peruvian restaurant, fresh seafood takes center stage with simple yet surprising preparations.

CAFÉ DE LA PLAYA

An extensive and fresh buffet for breakfast with a beautiful vertical garden on terraces.

HAVANA BAR

A relaxing respite set along the resort's reflecting ponds, with unique Cuban style decor, an extensive selection of rums and tequilas, and cigar rolling.

BAR A-KAN

The Lobby Bar, surrounded by the resort's reflection ponds, features meticulously designed wood ceilings, shutters, and carved wall art. Enjoy signature concoctions made by our lead mixologist.





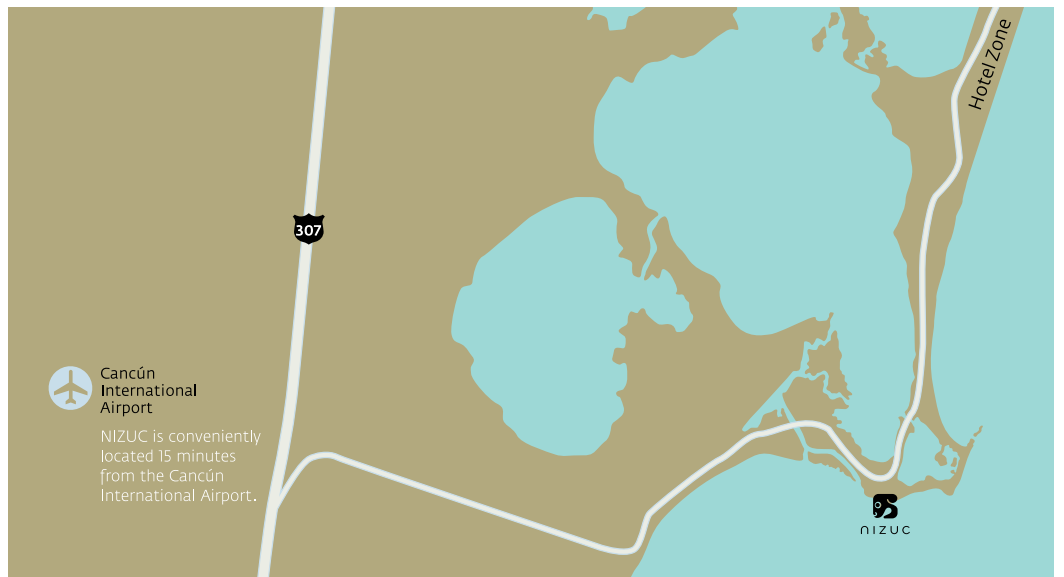
ABOUT

Located in the secluded enclave of Punta Nizuc, less than a 15-minute drive away from Cancún International Airport, NIZUC Resort & Spa redefines the standard for luxury in Mexico and around the world. Uniquely positioned inside a 29-acre natural reserve, NIZUC Resort & Spa captures the essence of the ancient and mystic Mayan culture with open, airy spaces, lush landscaping, tranquil reflecting pools, and organic elements that meld seamlessly with the region's verdant scenery.

Offering relaxed elegance and effortless comfort, the resort features two secluded beaches, five main swimming pools, a lavish Spa by ESPA, six gourmet restaurants and 274 villas and suites.

QUICK FACTS

- 15-minute drive from Cancún International Airport.
- Once a presidential retreat, the resort is located in the secluded enclave of Punta Nizuc overlooking two private beaches.
- 274 suites and villas; majority include a private plunge pool and beautiful ocean view.
- Spectacular culinary offerings with six specialty restaurants with world-renowned chefs, and four bars/lounge areas.
- World-class on-site catering.
- Expansive conference center with ocean views.
- Unique outdoor venues with astonishing backgrounds.
- Lavish spa branded by ESPA with 18 treatment rooms.
- Activities on site for your participants' enjoyment.
- Meetings: 0% VAT on guest room rental, audio/visual, catered food and beverage and transfers from/to the airport may apply.





ACCOMMODATIONS

274 luxurious suites and private villas on some of the most desirable beachfront property on the Yucatán Peninsula. These are divided amongst three areas of the resort, each area offering its own unique atmosphere.

THE SIGNATURE SUITES AND VILLAS



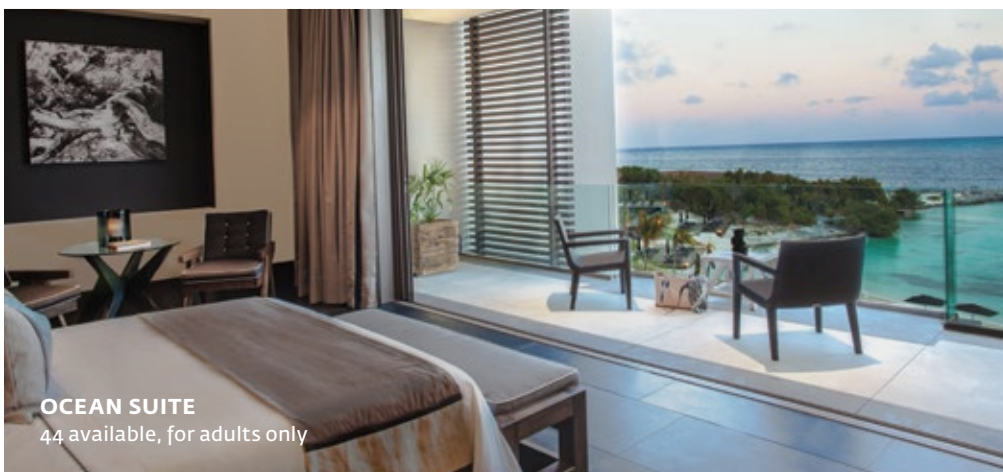
PRIVATE POOL VILLAS
27 available; 13 available with Pavilion



NIZUC VILLA
Unique accommodation at NIZUC



PRESIDENTIAL VILLA
Unique accommodation at NIZUC



OCEAN SUITE
44 available, for adults only

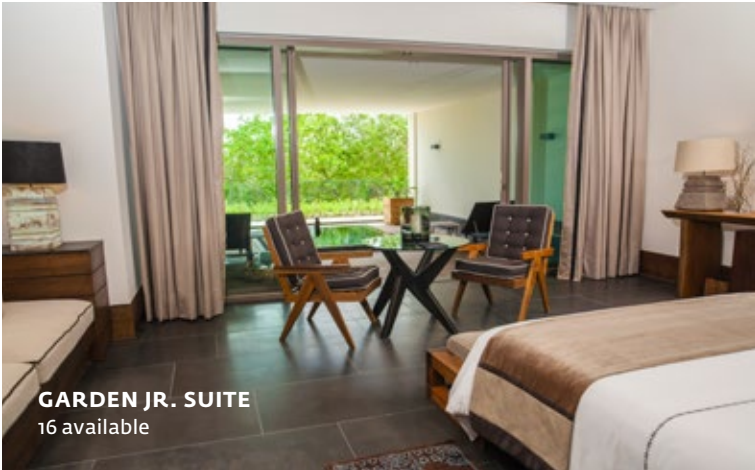
THE RESIDENCE SUITES



PENTHOUSE
8 available



GARDEN DELUXE SUITE
11 available



GARDEN JR. SUITE
16 available



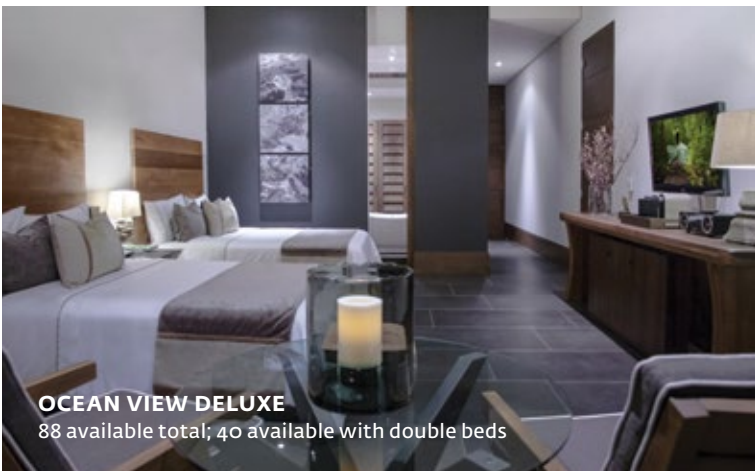
GARDEN VIEW KING
12 available



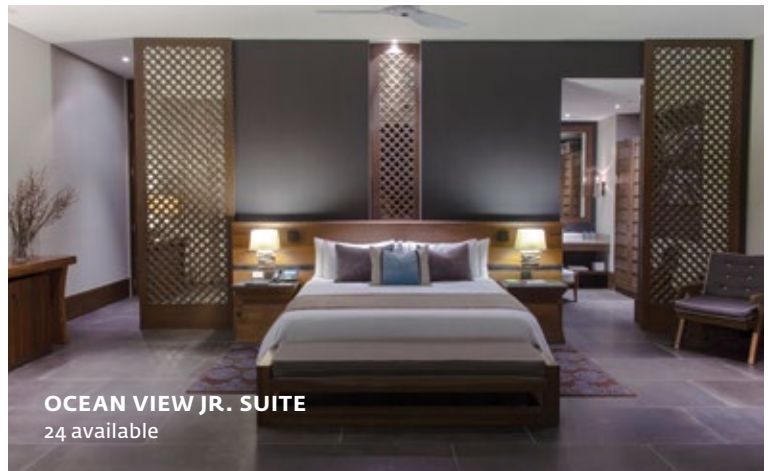
GARDEN VIEW DOUBLE
26 available



MASTER SUITE
16 available



OCEAN VIEW DELUXE
88 available total; 40 available with double beds



OCEAN VIEW JR. SUITE
24 available



nizuc

MEETINGS@NIZUC.COM | +52 998-8915700 | NIZUC.COM

